

CPST

Test Report

No. C180226003002-1

Date: Mar 01, 2018

Page 1 of 7

JYH HSU (JEC) ELECTRONICS LTD

Lu Chong Bridge Side, Dao Hou Rd, Cai Bai Country, Dao Jiao Town, Dong Guan City, Guang Dong

The following samples were submitted and identified on behalf of the clients as

Sample Name: JEC varistor
Model: JEC
Material: JEC
Description: Blue
CPST Internal Reference No.: C180226003
Sample Received Date: Feb 26, 2018
Test Period: Feb 26, 2018 to Mar 01, 2018
Test Method: Please refer to next page(s).
Test Result: Please refer to next page(s).

CONCLUSION :

<u>TESTED SAMPLES</u>	<u>TEST ITEM</u>	<u>RESULT</u>
JEC varistor	1.RoHS Directive 2011/65/EU Annex II amending Annex (EU)2017/2102 — Lead, Cadmium, Mercury, Hexavalent Chromium, PBBs and PBDEs Content —Di-(2-ethylhexyl) phthalate(DEHP), Benzylbutyl phthalate(BBP), Dibutyl phthalate (DBP), Diisobutyl phthalate(DIBP) Content	See the result See the result

Signed for and on behalf of
Euronos Consumer Products Testing Service Co., Ltd



TESTED BY :

REVIEWED BY:

APPROVED BY:

Andy Wang

Sunshine Liu

Will Pan

Wang Guang Yu, Andy
Project Leader

Liu Xiao Fang, Sunshine
Report Reviewer

Pan Jian Ding, Will
Technical Supervisor

This Test Report is issued by the Company subject to its General Conditions of Service printed overleaf or available on request and accessible at www.cpstlab.com. Attention is drawn to the limitations of liability, indemnification and jurisdictional issues defined therein. Unless otherwise stated the results shown in the test report refer only to the sample(s) tested. This test report cannot be reproduced, except in full, without prior written permission of the Company. Any unauthorized alteration, forgery or falsification of the content or appearance of this report is unlawful and offenders may be prosecuted to the fullest extent of the law.



400 111 6218

Euronos (Dongguan) Consumer Products Testing Service Co., Ltd

t (86-769) 38937858

f (86-769) 38937859

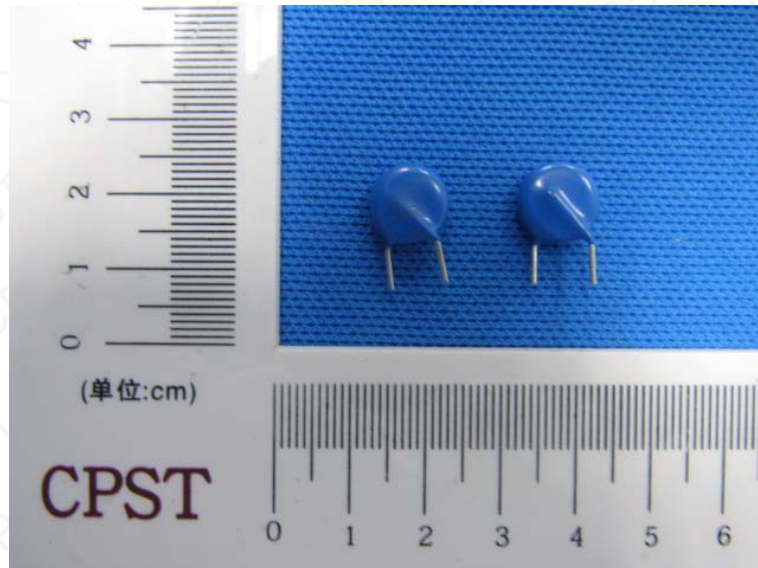
Http:// www.cpstlab.com

3/F., Huafeng Building, No.77, Hetian Avenue, Houjie, Dongguan, Guangdong, China.

Postcode: 523945

E-mail: service@cpstlab.com

Photo of the Submitted Sample



This Test Report is issued by the Company subject to its General Conditions of Service printed overleaf or available on request and accessible at www.cpstlab.com. Attention is drawn to the limitations of liability, indemnification and jurisdictional issues defined therein. Unless otherwise stated the results shown in the test report refer only to the sample(s) tested. This test report cannot be reproduced, except in full, without prior written permission of the Company. Any unauthorized alteration, forgery or falsification of the content or appearance of this report is unlawful and offenders may be prosecuted to the fullest extent of the law.

Test Result(s):

Description of Specimen : Non-metal part(mixed)

1. Lead, Cadmium, Mercury, Hexavalent Chromium, PBBs and PBDEs—RoHS Directive 2011/65/EU**Annex II amending Annex (EU)2017/2102**

Test Items	Unit	Test Method	Result	MDL
Lead (Pb)	mg/kg	IEC 62321-5:2013, ICP-OES	N.D.	2
Mercury (Hg)	mg/kg	IEC 62321-4:2013+A1:2017, ICP-OES	N.D.	2
Cadmium(Cd)	mg/kg	IEC 62321-5:2013, ICP-OES	N.D.	2
Hexavalent Chromium (CrVI)	mg/kg	IEC 62321-7-2:2017, UV-VIS	N.D.	2
Monobromobiphenyl	mg/kg	IEC 62321-6:2015, GC-MS	N.D.	5
Dibromobiphenyl	mg/kg	IEC 62321-6:2015, GC-MS	N.D.	5
Tribromobiphenyl	mg/kg	IEC 62321-6:2015, GC-MS	N.D.	5
Tetrabromobiphenyl	mg/kg	IEC 62321-6:2015, GC-MS	N.D.	5
Pentabromobiphenyl	mg/kg	IEC 62321-6:2015, GC-MS	N.D.	5
Hexabromobiphenyl	mg/kg	IEC 62321-6:2015, GC-MS	N.D.	5
Heptabromobiphenyl	mg/kg	IEC 62321-6:2015, GC-MS	N.D.	5
Octabromobiphenyl	mg/kg	IEC 62321-6:2015, GC-MS	N.D.	5
Nonabromobiphenyl	mg/kg	IEC 62321-6:2015, GC-MS	N.D.	5
Decabromobiphenyl	mg/kg	IEC 62321-6:2015, GC-MS	N.D.	5
Sum of PBBs	mg/kg	-	N.D.	-
Monobromodiphenyl ether	mg/kg	IEC 62321-6:2015, GC-MS	N.D.	5
Dibromodiphenyl ether	mg/kg	IEC 62321-6:2015, GC-MS	N.D.	5
Tribromodiphenyl ether	mg/kg	IEC 62321-6:2015, GC-MS	N.D.	5
Tetrabromodiphenyl ether	mg/kg	IEC 62321-6:2015, GC-MS	N.D.	5
Pentabromodiphenyl ether	mg/kg	IEC 62321-6:2015, GC-MS	N.D.	5
Hexabromodiphenyl ether	mg/kg	IEC 62321-6:2015, GC-MS	N.D.	5
Heptabromodiphenyl ether	mg/kg	IEC 62321-6:2015, GC-MS	N.D.	5
Octabromodiphenyl ether	mg/kg	IEC 62321-6:2015, GC-MS	N.D.	5
Nonabromodiphenyl ether	mg/kg	IEC 62321-6:2015, GC-MS	N.D.	5
Decabromodiphenyl ether	mg/kg	IEC 62321-6:2015, GC-MS	N.D.	5
Sum of PBDEs	mg/kg	-	N.D.	-

- Note:
1. mg/kg = milligram per kilogram = ppm
 2. N.D. = Not Detected (< MDL)
 3. MDL = Method Detection Limit
 4. "-" = Not Regulated

This Test Report is issued by the Company subject to its General Conditions of Service printed overleaf or available on request and accessible at www.cpstlab.com. Attention is drawn to the limitations of liability, indemnification and jurisdictional issues defined therein. Unless otherwise stated the results shown in the test report refer only to the sample(s) tested. This test report cannot be reproduced, except in full, without prior written permission of the Company. Any unauthorized alteration, forgery or falsification of the content or appearance of this report is unlawful and offenders may be prosecuted to the fullest extent of the law.

Di-(2-ethylhexyl) phthalate(DEHP), Benzylbutyl phthalate(BBP), Dibutyl phthalate (DBP), Diisobutyl phthalate (DIBP) Content—RoHS Directive 2011/65/EU Annex II amending Annex (EU)2017/2102

Test method: With reference to IEC 62321-8:2017, analysis was performed by GC-MS.

Test Items	Unit	Result	MDL
Di-(2-ethylhexyl) phthalate (DEHP)	mg/kg	N.D.	50
Benzylbutyl phthalate (BBP)	mg/kg	N.D.	50
Dibutyl phthalate (DBP)	mg/kg	N.D.	50
Diisobutyl phthalate(DIBP)	mg/kg	N.D.	50

Note:

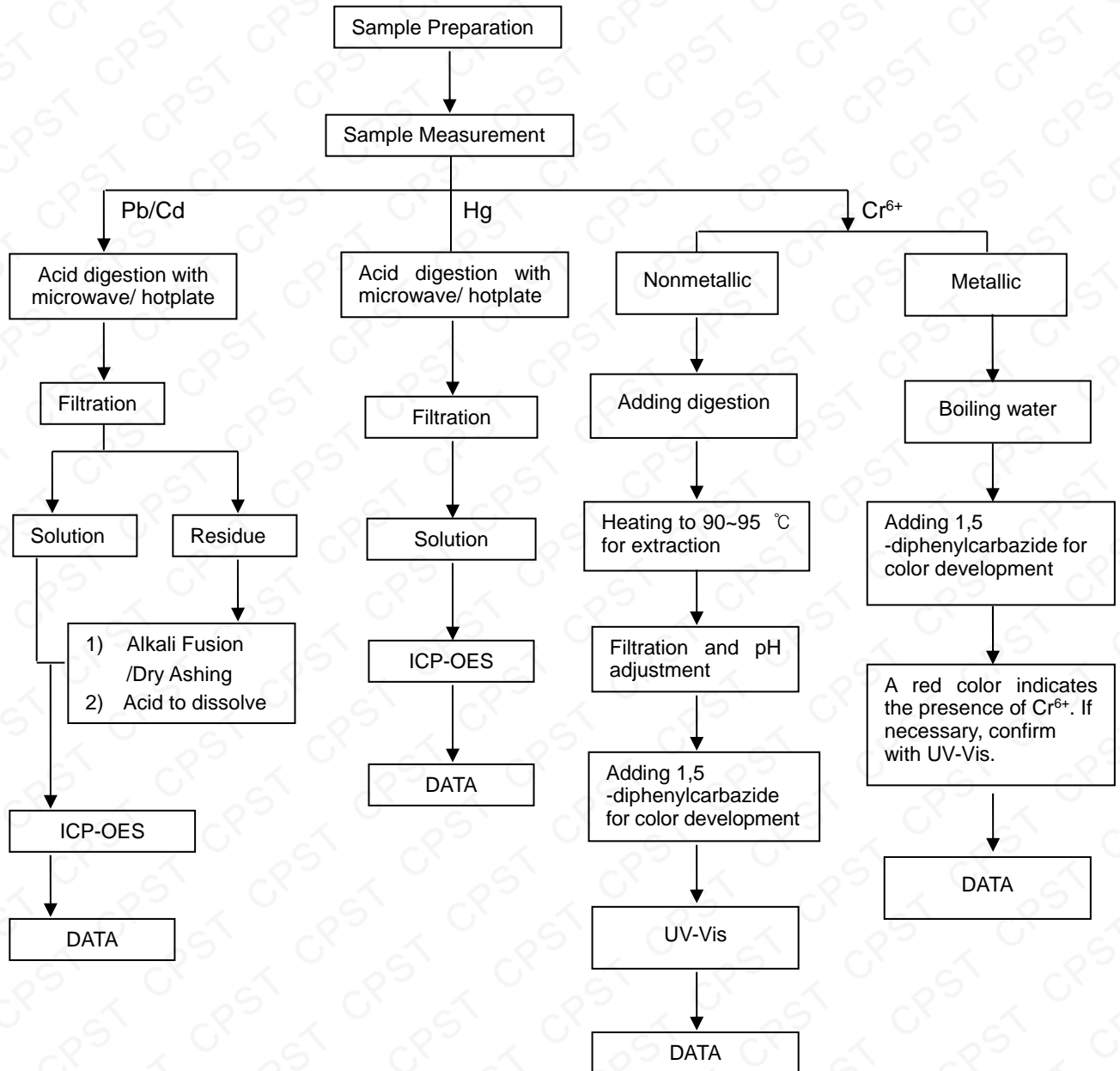
1. mg/kg = milligram per kilogram = ppm
2. N.D. = Not Detected (<MDL)
3. MDL = Method detection limit

This Test Report is issued by the Company subject to its General Conditions of Service printed overleaf or available on request and accessible at www.cpstlab.com. Attention is drawn to the limitations of liability, indemnification and jurisdictional issues defined therein. Unless otherwise stated the results shown in the test report refer only to the sample(s) tested. This test report cannot be reproduced, except in full, without prior written permission of the Company. Any unauthorized alteration, forgery or falsification of the content or appearance of this report is unlawful and offenders may be prosecuted to the fullest extent of the law.



Pb/Cd/Hg/Cr⁶⁺ Testing Flow Chart

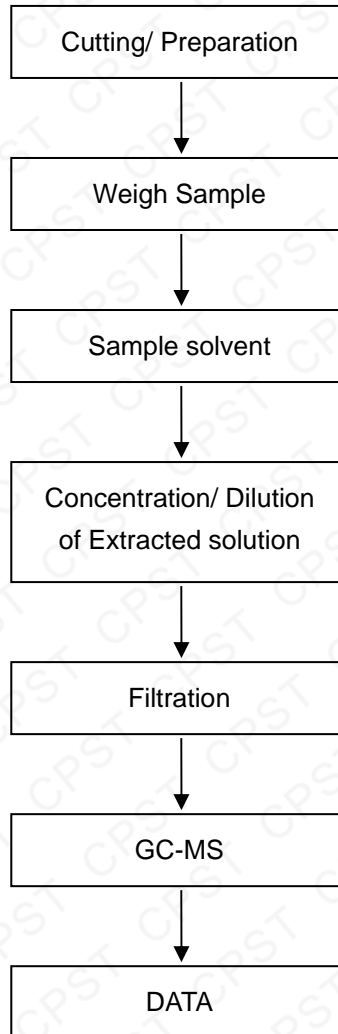
- 1) Name of the person who made measurement: Andy Wang
- 2) Name of the person in charge of measurement: James Wang
- 3) These samples were dissolved totally by pre-conditioning method according to below flow chart.
(Cr⁶⁺ test method excluded)



This Test Report is issued by the Company subject to its General Conditions of Service printed overleaf or available on request and accessible at www.cpstlab.com. Attention is drawn to the limitations of liability, indemnification and jurisdictional issues defined therein. Unless otherwise stated the results shown in the test report refer only to the sample(s) tested. This test report cannot be reproduced, except in full, without prior written permission of the Company. Any unauthorized alteration, forgery or falsification of the content or appearance of this report is unlawful and offenders may be prosecuted to the fullest extent of the law.

PBBs/PBDEs Testing Flow Chart

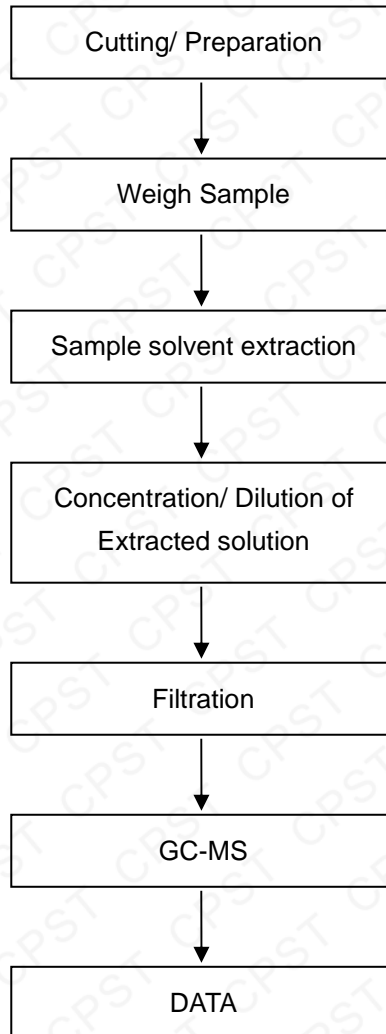
- 1) Name of the person who made measurement: Andy Wang
- 2) Name of the person in charge of measurement: James Wang



This Test Report is issued by the Company subject to its General Conditions of Service printed overleaf or available on request and accessible at www.cpstlab.com. Attention is drawn to the limitations of liability, indemnification and jurisdictional issues defined therein. Unless otherwise stated the results shown in the test report refer only to the sample(s) tested. This test report cannot be reproduced, except in full, without prior written permission of the Company. Any unauthorized alteration, forgery or falsification of the content or appearance of this report is unlawful and offenders may be prosecuted to the fullest extent of the law.

Phthalates Testing Flow Chart

- 1) Name of the person who made measurement: Andy Wang
- 2) Name of the person in charge of measurement: James Wang



*** End of Report ***

This Test Report is issued by the Company subject to its General Conditions of Service printed overleaf or available on request and accessible at www.cpstlab.com. Attention is drawn to the limitations of liability, indemnification and jurisdictional issues defined therein. Unless otherwise stated the results shown in the test report refer only to the sample(s) tested. This test report cannot be reproduced, except in full, without prior written permission of the Company. Any unauthorized alteration, forgery or falsification of the content or appearance of this report is unlawful and offenders may be prosecuted to the fullest extent of the law.